



Order online!
www.thaisilks.com

July 2022

Summer Sale

All fabrics are 100% Silk unless otherwise noted.

Was **Sale**



790-5

Miscellaneous Scarves

790-5 **Charmeuse/Jacquard-Striped, small gems, 36x36"**\$20.05 **\$16.00**

This scarf was designed to have a decorative border about 3 inches wide on all four sides. However it was not cut properly so the "border" is placed randomly, but near the center, of each scarf. Two sides have the border in the proper position. The scarves are decorated with tiny rhinestones.



744-154

744-154 **Beads around Chiffon, Black, 9x54"**\$10.95 **\$6.15**

Ties - Paint or dye

144-6 **Jacquard necktie, "Optical" pattern, 3.25"**\$6.20 **\$4.50**

146-000 **Charmeuse necktie, 2.5" wide**\$6.80 **\$4.45**

147-000 **Shantung necktie, 3.5" wide**\$8.30 **\$5.40**



144-6



146-000



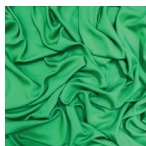
147-000



102-1X

B-Grade Scarf

102-1X **8mm Habotai, RUNS, 29x29"**\$5.75 **\$3.85**



T175-AM21-1

Fabric

T175-AM21-1 **175gram Tencel Twill, 100% Tencel, Kelly Green, 54-59"**\$11.75 **\$9.85**

Please phone, fax, mail your order or place online at www.thaisilks.com. To speed our response, please refer to your account number.
 Sale begins July 18 through August 1, 2022. The minimum cut is 1 yard per fabric selection
 Sorry we cannot accept backorders at sale prices. Prices subject to change without notice.



Order online!
www.thaisilks.com

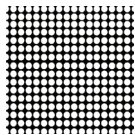
July 2022

Summer Sale (continued)

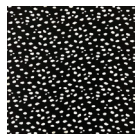
All fabrics are 100% Silk unless otherwise noted.

B-grade Fabrics

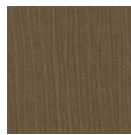
		Was	Sale
11JP-1519-1X	Printed Charmeuse, Graphic Spots - white on black, MISPRINT, 45"	\$31.60	\$9.85
15DWP-AM98-1X	Printed Crepe, Pebbles - White on Black, MISPRINT, 54"	\$23.70	\$15.75
016A-502X	"Ribbed" Silk/Linen , 55% Silk/45% Linen, String, DYE BARS, 45"	\$19.02	\$7.45
019C-154X	Spun Broadcloth , Black, WHITE THREADS, 45"	\$15.80	\$7.05
0020-409X	Raw Silk Noil , Olive, UNEVEN DYE, 45"	\$17.45	\$6.50
021Y-101X	Taffeta , Ivory, FOLD LINES, 54"	\$28.95	\$14.45
25AD-154X	Devore Satin, "Magnolias" , 51% Silk/49% Rayon, Black, SNAGS/RUNS, 45"	\$12.40	\$7.45
026A-408X	8mm Habetai , Olive, OIL SPOTS, 45"	\$13.50	\$6.80
30HP-1303-2X	Handpainted Devore Satin, "Reef" , 55% Silk/45% Rayon, Fuchsia/Wine/Black, SLIPPAGE, 45"	\$25.35	\$5.45
0041-154X	Crinkle Burnout Velvet, Dots , 65% Silk/35% Rayon, Black, SMALL HOLES, 45"	\$13.50	\$8.75
0041-436X	Crinkle Burnout Velvet, Dots , 65% Silk/35% Rayon, Citronelle SMALL HOLES, 45"	\$13.50	\$8.75
89LP-154SX	9mm Print Lurex , 30% Silk/70% Cotton, Silver/Black, SPOTS, 54"	\$9.75	\$4.35



11JP-1519-1X



15DWP-AM98-1X



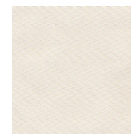
016A-502X



019C-154X



0020-409X



021Y-101X



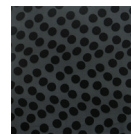
25AD-154X



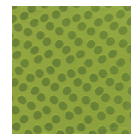
026A-408X



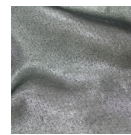
30HP-1303-2X



0041-154X



0041-436X



89LP-154SX