



# Thai Silks!

252 State Street, Los Altos, CA 94022  
Phone: (650) 948-8611 • (800) 722-7455  
FAX: (650) 948-3426 • silks@thaisilks.com

February 2013

## It's the Season for Beautiful Creations in Bridal Silks



Complimentary samples may be requested. 100% Silk unless otherwise noted.  
Dressmaker Discounts Apply. New customers, see Discount Policy for details.

\* = More colors available

Sample 1 of 2

Price per yard

1	<b>09BW-100</b>	<b>Double Sided Satin</b> , 40mm, 54", Dyed White ..... <b>66.45</b> The Queen of satins, luxurious sheen and drape, "like butter."	
2-4	<b>11CW</b>	<b>Duchesse Satin</b> , 54", (100) Dyed White, (101) Ivory, (102) Cream ..... <b>49.60</b> Crisp and formal, eminently suitable for a princess line and full train.	
5-7	<b>021Y*</b>	<b>Silk Taffeta</b> , 54", (100) Dyed White, (101) Ivory, (102) Cream ..... <b>31.35</b> Impeccably polished with its unmistakable rustle when you glide down the aisle. Ruched and ruffled or sleek and smooth, always a classic.	
8	<b>011M-000</b>	<b>40mm Charmeuse</b> , 54", Natural White ..... <b>55.45</b> Heavy, drapey, sumptuous crepe-backed satin.	
9-10	<b>002A*</b>	<b>Thai Silk</b> , 45", (100) Dyed White, (101) Ivory ..... <b>29.15</b> A lighter weight taffeta, once worn only by royalty, this exclusive cottage industry silk adds a subtle textural touch to any gown.	
11	<b>071F-000</b>	<b>Silk Tulle</b> , 52", Natural White ..... <b>15.75</b> Light as air but strong enough to carry hand-sewn lace and beads in the top couture houses of France and Italy.	
12	<b>15JW-000</b>	<b>8mm Silk Chiffon</b> , 54", Natural White..... <b>11.95</b> In several floating layers or overlaid on charmeuse, a fairy tale vision of loveliness.	
13	<b>22BW-000</b>	<b>5mm Crinkle Silk Georgette</b> , 54", Natural White..... <b>8.30</b> Also called "French" Georgette, the subtle crinkle gives an artisanal touch.	
14	<b>071E-000</b>	<b>16mm Double Crinkle Georgette</b> , 54", Natural White ..... <b>25.10</b> Crinkle effect becomes even stronger when pre-washed. Fun and flirty.	
15	<b>070P-000S</b>	<b>Lame' Chiffon</b> , 73% Silk/27% Lurex, 54", Silver/Natural ..... <b>18.45</b> Dramatic silver adds a luxe touch to an opulent ensemble.	
16	<b>070P-000G</b>	<b>Lame' Chiffon</b> , 73% Silk/27% Lurex, 54", Gold/Natural..... <b>18.45</b> Hollywood glamour and glitz at an affordable price.	
17-18	<b>015J*</b>	<b>8mm Silk Chiffon</b> , 44" (301) Light Blue, (625) Hot Coral..... <b>12.25</b> Perfect for bridesmaids in a myriad of styles, add a pop of cool or bold color to the wedding party.	
19-20	<b>010A *</b>	<b>30mm Heavy Crepe</b> , 45" Elegant, drapey, and slimming for the fuller figure. Resists wrinkles. (000) Natural White..... <b>34.55</b> (102) Cream..... <b>40.65</b>	

Please visit our web site: [www.thaisilks.com](http://www.thaisilks.com) as many of these fabrics have a full color range.

# Thai Silks!



100% Silk unless otherwise noted. \* = More colors available.

Sample 2 of 2

Price per yard

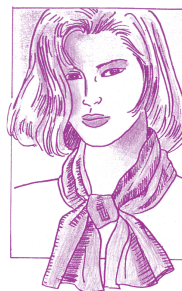
- |       |                 |   |              |
|-------|-----------------|---|--------------|
| 1-2   | <b>15GW*</b>    | <b>Silk Organza, 5.5mm, 54"</b> .....   | <b>10.35</b> |
|       |                 | (100) Dyed White, (102) Cream<br>Crisp, semi-opaque organza is a timeless winner.   |              |
| 3     | <b>23MW-000</b> | <b>8.5mm Silk Satin Organza, 54"</b> .....  | <b>15.55</b> |
|       |                 | (000) Natural White<br>Lustrous organza with a satin face, adds volume to the fuller skirt or shaping to a column. Great under layer as well. |              |
| 4-5   | <b>30LW*</b>    | <b>Iridescent Silk Chiffon, 6mm, 54"</b> .....  | <b>16.25</b> |
|       |                 | (001) Purple/Evergreen, (721) Pretty Pink<br>Shimmering cross-dyed threads create luminosity and drama for bridesmaids.                       |              |
| 6     | <b>073L-000</b> | <b>Embroidered Crinkle Georgette, 52"</b> , Natural White, "Floral Garland" .....   | <b>18.65</b> |
|       |                 | 100% Silk with 100% Cotton Embroidery. A dusting of meadow wildflowers graces whisper-thin yet strong crinkle georgette.                      |              |
| 7     | <b>073V-000</b> | <b>Embroidered Crinkle Georgette, 52"</b> , Natural White, "Ovals and Circles" .....  | <b>21.45</b> |
|       |                 | 100% Silk with 100% Cotton Embroidery. Repeat pattern adds a modern flair to an ancient technique.  |              |
| 8     | <b>0043-000</b> | <b>Velvet Flocked Chiffon, 70% Silk/30% Rayon, 45"</b> , "Rose Outline", Natural White .....  | <b>21.85</b> |
|       |                 | Perfect for the wedding with a dreamy floral theme, you can almost stop and smell the roses!  |              |
| 9     | <b>37BW-000</b> | <b>Cut Velvet, 40% Silk/60% Rayon, 54"</b> , "Mixed Bouquet", " Natural White .....   | <b>29.40</b> |
|       |                 | Floral notes from the English country garden create a retro, romantic look.   |              |
| 10    | <b>001Y-000</b> | <b>15mm Silk Jacquard, 45"</b> , "Digital", Natural White .....   | <b>18.90</b> |
|       |                 | High-tech dots in a uber-modern pattern for the fashion-forward entrepreneur.   |              |
| 11    | <b>01CM-000</b> | <b>Silk Jacquard, 45"</b> , "Swirl," Natural White .....  | <b>17.65</b> |
|       |                 | Festive swirls add a celebratory atmosphere to exquisite Silk Jacquard.   |              |
| 12    | <b>025G-000</b> | <b>Devore Satin, 80% Silk/20% Rayon, 45"</b> , "Twigs", Natural White .....   | <b>14.65</b> |
|       |                 | Organic, abstract, natural look, perfect for that beach or garden wedding.  |              |
| 13    | <b>25AR-000</b> | <b>Devore Satin, 80% Silk/20% Rayon, 45"</b> , "Wheat", Natural White .....   | <b>14.65</b> |
|       |                 | Another lovely, ethereal look for the nature girl.  |              |
| 14-15 | <b>013C*</b>    | <b>Huan Li</b> (pronounced 'One Lee') <b>Crepe, 45"</b> , "Baroque" .....   | <b>21.85</b> |
|       |                 | (727) Persimmon, (348) Denim Perfectly elegant choice for the mother of the bride or groom.   |              |
| 16-17 | <b>011D</b>     | <b>Sueded Silk Charmeuse, 45"</b> (540) Shell Pink, (622) Sanded Oak .....  | <b>26.95</b> |
|       |                 | Softly sueded Charmeuse has a sensual touch in neutral tones for the contemporary bride and her attendants.                                   |              |

Please visit our web site  
**www.thaisilks.com**

as many of these fabrics have a full color range.

For a complete set of all our Bridal Fabrics, order our  
**Bridal Sample Set for \$12 plus shipping.**

Order fast for best selection. To speed our response, please refer to your account number when ordering. PRICES SUBJECT TO CHANGE WITHOUT NOTICE. Please ask for current price when placing order.



## Free Scarf!

**Silk Matelassé Scarf  
in Rose Design**

With your purchase of \$50 .00 or more.  
Mention this Free Offer in the  
'comments' field if you order online.  
Offer expires April 12, 2013